







New financial support available

There are many reasons why you may be finding it difficult to cope financially.

You can apply for immediate and ongoing advice and financial support around essential outgoings such as:

 **water**  **food**  **energy**  **housing costs** and other essentials such as  **warm clothing** and  **fuel**.

We have a range of support options available to help customers who are struggling financially. This could be for a number of reasons:

- being made redundant
- a cut in working hours
- owning a business that has been closed due to lockdown
- increased living costs
- a cut in income.



This support is flexible and can give you support for your immediate or long-term needs

To apply for support you must:

- live in South Gloucestershire
- be over the age of 16

The fund is only available until 📅 **31 March 2022**.

How to apply

Complete the form online at:

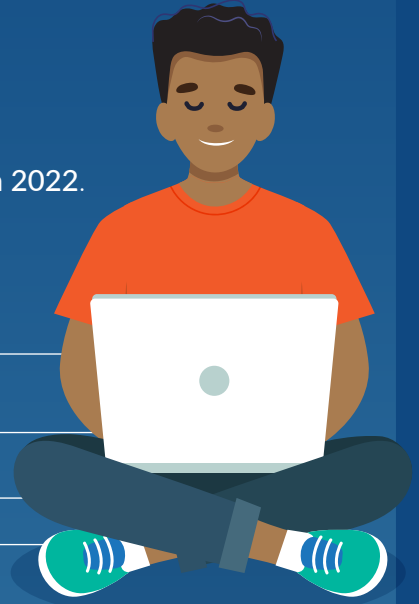
🌐 [www.southglos.gov.uk/
financial-support-for-residents](http://www.southglos.gov.uk/financial-support-for-residents)

Email:

✉ OSSAppointments@southglos.gov.uk

In person:

👤 **South Gloucestershire Council One Stop Shop**
in Kingswood, Yate or Patchway, see
www.southglos.gov.uk/contactus for details
or call the number above.



What happens next?

We will review your application and seek supporting evidence to help us access your claim.

After you apply you will hear from us within two working days for immediate support and five working days for long term support.